



CONNECTING
PEOPLE,
PLACES &
PRESERVATION



PENNSYLVANIA
STATE HISTORIC
PRESERVATION OFFICE
ANNUAL REPORT
2020



THE PENNSYLVANIA STATE
HISTORIC PRESERVATION
OFFICE (PA SHPO) IS THE
OFFICIAL HISTORIC
PRESERVATION AGENCY FOR
THE COMMONWEALTH OF
PENNSYLVANIA.

Thank you
for your
continued
support

PA SHPO Staff
January 2020

The [PA SHPO](#), a bureau within the Pennsylvania [Historical & Museum Commission](#) (PHMC), administers state historic preservation programs authorized through the Pennsylvania History Code (Title 37 of the Pennsylvania Code) and manages several Federal programs created by the National Historic Preservation Act of 1966 (NHPA), as amended (16 U.S.C. 470).

PA SHPO uses its resources to educate, encourage, and enable Pennsylvanians to value and preserve the commonwealth's unique cultural and historic heritage. Our role is to identify, promote, and protect the architectural and archaeological resources of Pennsylvania.

Congress' Historic Preservation Fund (HPF), which is managed by the National Park Service, financially supports the work of State Historic Preservation Offices (SHPOs) and is used for activities that promote cultural heritage while bolstering the economy and creating jobs. The HPF provides a significant portion of the PA SHPO's annual budget and comes from off-shore oil leases rather than Federal taxes. The Commonwealth of Pennsylvania supports the work of the PA SHPO through the General Government Operations fund and the Keystone Recreation, Park & Conservation Fund.

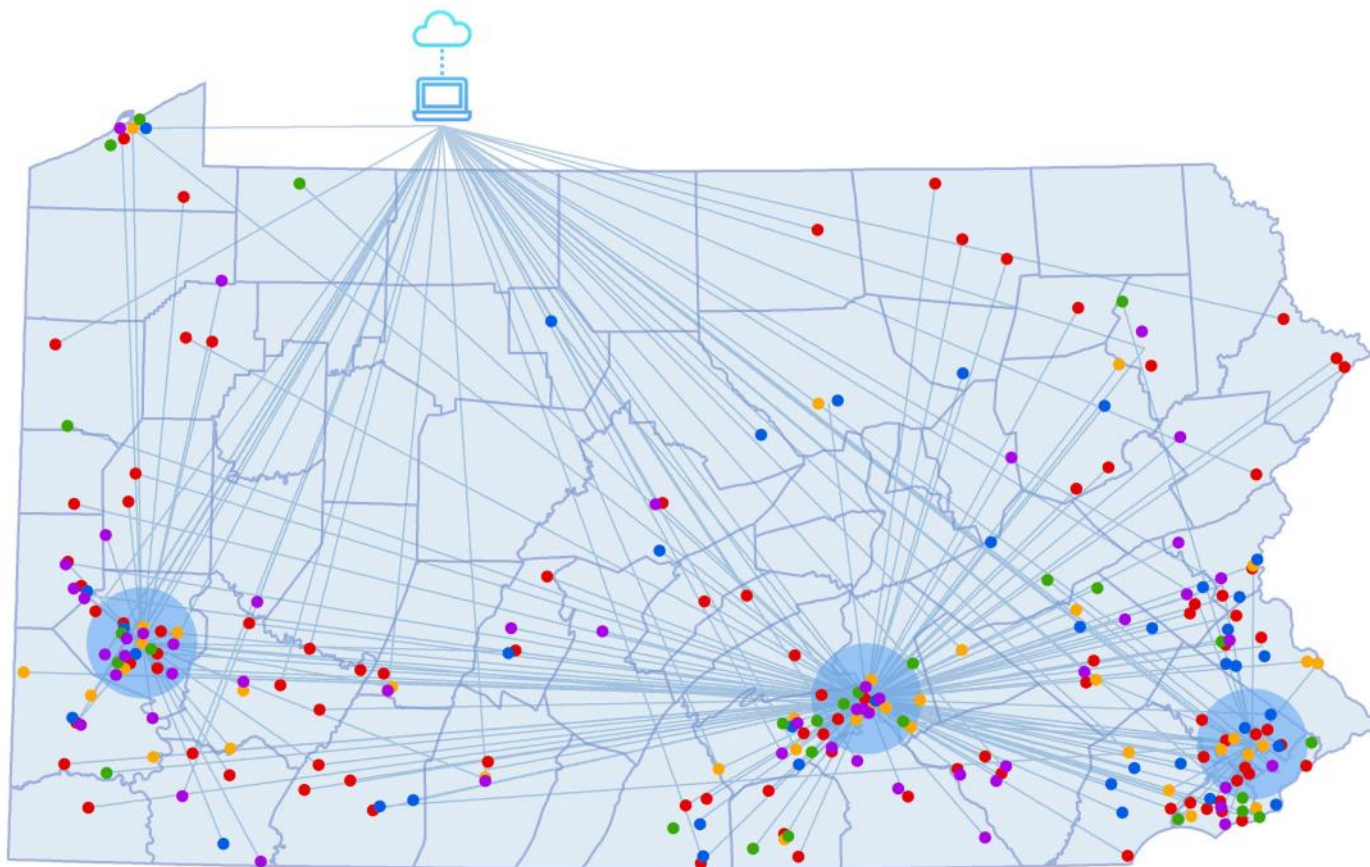
The PA SHPO also supplements their annual HPF budget through a number of partnerships with other state and federal agencies to support staffing and program activities.

The government's investment in Pennsylvania's older and historic places has far-reaching benefits that touch every Pennsylvanian through the state and federal historic preservation programs administered by the PA SHPO.





PA SHPO's accomplishments are captured each year through our reporting for the federal fiscal year (Oct—Sept), state fiscal year (July—June) and the calendar year. The figures above represent a snapshot of PA SHPO accomplishments for 2020.



PA SHPO Community Engagement

The benefits of the PA SHPO's historic preservation programs can be seen throughout the commonwealth. These programs help Pennsylvanians realize preservation outcomes for the places that are important to them through activities that celebrated, documented, invested, protected, and taught people about Pennsylvania's older and historic places.

SHPO's main office is in Harrisburg and its regional offices are in Pittsburgh and Fort Washington, Montgomery County, to serve constituents throughout the commonwealth. These offices are represented by large light blue circles.

This map represents the many ways and many places that SHPO's three offices make connections between people, place and community.

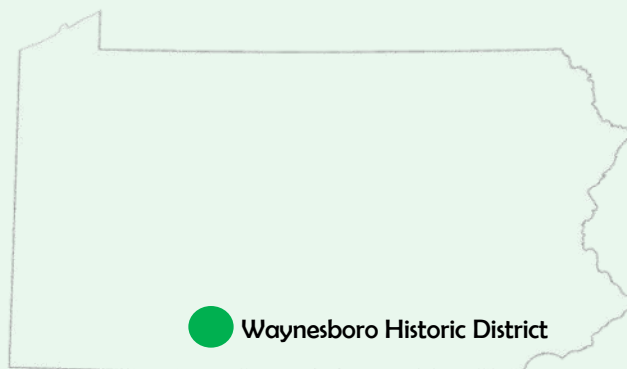
- Celebrating
- Documenting
- Investing
- Protecting
- Teaching

**29
Staff**

**450+
Activities**

**34,000+
People
Engaged**

Celebrating



Waynesboro Historic District Historic Designation Celebration Waynesboro, Franklin County

Mainstreet Waynesboro, Inc. hosted a successful virtual "Historic Designation Celebration" in May 2020. The group had originally prepared for an in-person event to celebrate the recent listing of the Waynesboro Historic District in the National Register of Historic Places.

When COVID-19 precautions meant they couldn't host a large crowd, they quickly changed to a Facebook Live event showcasing the Waynesboro community and its many older and historic places.

Mainstreet Waynesboro's Facebook Live event included local leaders, PA SHPO staff, and the National Register nomination consultant to talk about designation, history of the community, and what listing in the National Register means.

Waynesboro had been working toward this national recognition of the community's history and architecture for a long time. Now that the historic district is listed, preservation incentives like historic tax credits are available to business owners there.

While a large crowd may have joined Mainstreet Waynesboro in Franklin County to celebrate the National Register listing and learn more about preservation in person, over 1,700 people have watched the Facebook Live event recording, spreading a positive message about Waynesboro's historic community and historic preservation far and wide.

Mainstreet Waynesboro, Inc. was also recognized with a 2020 Community Initiative Award.



Documenting



Crawford Grill No. 2 Pittsburgh, Allegheny County

Crawford Grill No. 2, which opened in the Sochatoff Building in Pittsburgh's Hill District in 1945, is one of Pennsylvania's legendary jazz clubs.

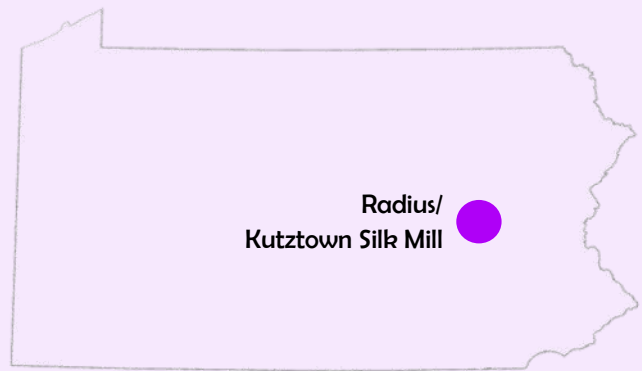
During the food-and-music hotspot heyday in the 1950s and 1960s, the Crawford Grill No. 2's patrons—who included playwright August Wilson and Martin Luther King, Jr.—listened to jazz greats such as Charles Mingus, Clifford Brown, Nat King Cole, Maynard Ferguson, Thelonious Monk and Max Roach. The business finally closed in 2003, leaving the building vacant.

PA SHPO has worked with the Pittsburgh community to recognize, preserve and rehabilitate Crawford Grill No. 2.

- In 2001, a PHMC historical marker was installed outside the building to draw attention to its history and significance.
- [In 2018, a Keystone Historic Preservation Grant financially supported the preparation of a Master Plan and historic structure report.](#) These studies included research into the building's and the Grill's history, conditions assessments, and guidance for the preservation of important interior spaces.
- In 2019, PA SHPO sponsored a National Register nomination for Crawford Grill No. 2 as part of its [proactive National Register initiative](#), which identifies older and historic places that can benefit from listing in the National Register of Historic Places and pursues nominations, either through staff preparation or hired consultant, for a select number of properties each year.



Investing



Radius/Kutztown Silk Mill Kutztown, Berks County

The historic Kutztown Silk Mill was transformed into the home of toothbrush manufacturer, Radius, thanks to the federal and state historic preservation tax credits.

Built ca. 1895, the Kutztown Silk Mill was one of dozens of mills throughout Pennsylvania's Lehigh Valley that produced silk for the international market during the first half of the 20th century.

The 40,000 square foot complex had been underutilized for decades before local toothbrush company Radius, which has been making eco-friendly oral hygiene products for many years, decided to rehabilitate the unoccupied silk mill.

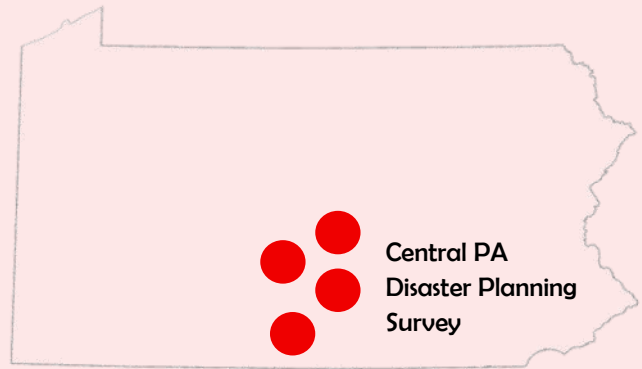
Exterior rehabilitation work included window, door and roof replacement, roof structure redesign and repair due to past fire damage, masonry repointing and cleaning, and restoring the fire escape. Interior work focused on repairing and restoring historic fabric, installing modern conveniences, and upgrading building systems.

The main original mill building includes a factory store, storage and offices and the 1940s addition, where workers once made silk parachutes for WWII, houses highly technological machines for installing bristles in toothbrushes and for injection molding.

The project has brought the silk mill back to life, returning it to its glory days of producing quality goods and supporting its community.



Protecting



Central Pennsylvania Disaster Planning Survey Dauphin, Cumberland, Perry & Juniata Counties

Throughout 2019 and early 2020, architectural historians and survey engineers documented historic properties and communities in Dauphin, Cumberland, Perry, and Juniata Counties.

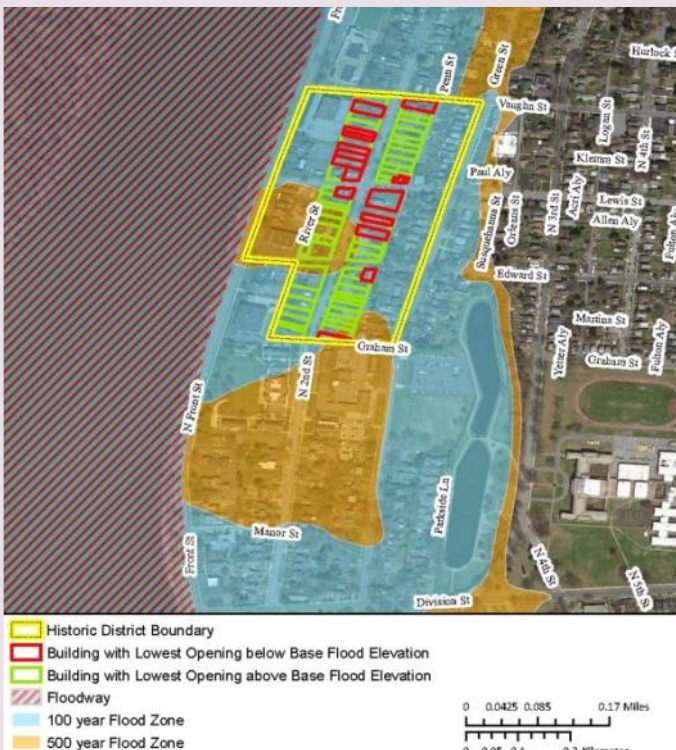
These survey projects were undertaken as part of PA SHPO's Disaster Planning for Historic Properties Initiative, which was funded by a 2012 Hurricane Sandy grant from the National Park Service.

The [Central PA Survey](#) prioritized a holistic look at communities whose community character might be most at risk from flooding and for which there was little information in PA SHPO's database.

In addition to documenting standard characteristics of the buildings and capturing a current photograph, the survey results were mapped in context with floodways and 100- and 500-year floodplains to illustrate risks to historic buildings from flooding.

This four-county project highlighted the importance of maintaining and safeguarding a strong sense of place in Pennsylvania's historic communities.

Understanding risk to a single home or business in the context of what the loss of that home or business might mean to the community it contributes to and the people who value it gives us a better understanding of the true risks of future flooding.



Teaching

#ReadyForPreservation Webinar

#READYFORPRESERVATION: TOOLS & TIPS TO SUPPORT YOUR DOWNTOWN'S RECOVERY & REVITALIZATION

PA SHPO & PDC WEBINAR
MAY 28, 2020



Pennsylvania State Historic Preservation Office
PENNSYLVANIA HISTORICAL AND MUSEUM COMMISSION



PENNSYLVANIA
Downtown Center
Since 1987

#ReadyForPreservation: Tools & Tips to Support Your Downtown's Recovery & Revitalization

Commercial downtowns are the economic, social, and cultural heart of many Pennsylvania communities. These buildings, businesses and activities often reflect a community's history, values and economic core as well as the aspirations of local leaders and community members.

For most of the last year, Pennsylvania downtowns face the daunting tasks of reacting to the health and safety needs of patrons, employees and the public, responding to economic uncertainty, and planning for a post-pandemic recovery.

In May 2020, PA SHPO and the Pennsylvania Downtown Center (PDC) hosted a webinar, [#ReadyForPreservation](#), for communities across the commonwealth to explore the different ways communities could sensitively manage the changes they faced as a result of the pandemic's impact.

Based upon the Main Street principles of Economic Vitality and Design, this webinar is focused on providing realistic and practical suggestions for communities of all shapes and sizes whether they are in the reaction, response, or recovery phase.

Over 180 attendees joined PA SHPO's Community Preservation Coordinators and one PDC's Field Services Coordinators to learn about messaging, vacancy management or prevention, Historic Architectural Review Board or Preservation Commission activities and more.

Reaction

What do we do in the near term to allow our communities to resume activity safely and quickly?

How does historic preservation fit into these conversations?

Response

How do we manage the changes in our communities that will result from the pandemic?

Recovery

How do we position our communities to recover and adapt?

#PreservationHappensHere!

May 2020

Recovery

Zoning & Infrastructure

→ What are the development requirements?

- Off-street spaces
- Public or shared parking
- Is your broadband and network capacity ready?
- Are outdoor dining spaces an option?



Lewisburg

May 2020

#PreservationHappensHere!



#PreservAtionHappensHere
is Pennsylvania's statewide
historic preservation plan
for 2018 through 2023.

4 Goals

Every community deserves the chance to realize the economic, environmental, and quality-of-life benefits that preservation offers. This plan can help.

The statewide historic preservation planning process gathered brilliant ideas for improving the future of historic places in Pennsylvania. The resulting plan is a means to achieving that goal, but in order to be successful, the plan must mobilize people and resources.

This five-year plan lays out a framework of activities and goals that will:

- implement the plan,
- help Pennsylvanians better understand historic preservation and its benefits,
- appreciate their own histories and their shared histories as told through historic places, and
- balance history, economics, and development to manage change within their communities.

It also satisfies Pennsylvania's statewide historic preservation planning obligations set forth under the National Historic Preservation Act and the PA History Code.

Learn more at www.phmc.pa.gov/Preservation/About/Pages/Statewide-Historic-Preservation-Plan.



#PreservAtionHappensHere is the idea that great preservation activities *are* happening every day across Pennsylvania. These activities whether they may or may not be thought of as historic preservation, nevertheless, need to be identified, shared, and celebrated!

The PA SHPO is always looking for the next Preservation Success Story for the Community Initiative Awards. To be considered, Pennsylvanians can simply use the hashtag *#PreservAtionHappensHere* in their social media posts or email the PA SHPO with their Preservation Success Story.

Organizations, municipalities, agencies, projects, places, and individuals are all eligible to win.

Award Recipients include:

- Old Erie on Foot/Erin Phillips, Erie County
- Society for the Preservation of Maxo Vanka's Murals, Allegheny County
- Mainstreet Waynesboro, Inc., Franklin County
- Fighter's Heaven, Schuylkill County
- Lazaretto, Delaware County
- Mahoning Drive-In Theater, Carbon County
- Roxian Theatre, Allegheny County
- Walk In Art Center, Schuylkill County
- Jefferson County History Center, Jefferson County
- Redbank Valley Trails Association, Clarion County
- Bradford Revitalization Team, McKean County
- East Liberty Development, Inc., Allegheny County
- Hidden City Philadelphia, Philadelphia County

Learn more at www.phmc.pa.gov/Preservation/education-outreach/Pages/Community-Initiative-Awards.

Erin Phillips was recognized with a 2020 Community Initiative Award for promoting historic preservation, local history and more through her 'Old Erie on Foot' Instagram and blog

PA SHPO's
Community Initiative Awards
recognize organizations,
municipalities, agencies, and
individuals whose work embody
#PreservAtionHappensHere.



NATIONAL REGISTER OF HISTORIC PLACES

22

**Resources listed
in the National
Register last year**

3,300+

**Buildings, districts
and more listed in
the National
Register in PA**

Pennsylvanians list their properties in the National Register of Historic Places for different reasons. For some, listing brings opportunities for funding that helps with the costs of preserving, rehabilitating, or maintaining a historic property. For others, inclusion in the National Register provides opportunities for recognizing the historic places that are important to a community and for educating others about the value of a community's irreplaceable assets.

The National Register of Historic Places is the official list of the Nation's historic places worthy of preservation. It is a federal program, authorized by the National Historic Preservation Act of 1966, as amended, and administered by the PA SHPO in partnership with the National Park Service. Listing is one tool Pennsylvanians can use to help them reach their preservation goals for their historic properties.

In Pennsylvania, the PA SHPO assists dozens of communities, municipalities, and property owners with the National Register listing process each year. Because National Register listing unlocks opportunities for preservation, the program is often used in conjunction with other state and federal historic preservation programs.

As part of PHMC's commitment to Diversity, Equity, Inclusion and Access (DEIA), PA SHPO routinely identifies older and historic places that can benefit from listing in the National Register of Historic Places and pursues National Register nominations, either through staff preparation or hired consultant, for a select number of properties each year.

National Register nominations are reviewed by Pennsylvania's Historic Preservation Board three times a year in February, June and October at public meetings.

Learn more at www.phmc.pa.gov/Preservation/National-Register.



**The 19th century John
Wagner Family Farmstead
was listed in the National
Register of Historic Places in
2020. The centerpiece of
the farm is the Standard
Pennsylvania Closed
Forebay Barn.**

In Pennsylvania's many diverse communities, the iconic blue and gold cast aluminum markers are memorials, history lessons, travelers' guideposts, tourist attractions, and sources of pride.

Pennsylvania's historical markers help people capture the memory of people, places, events, and innovations that have affected the lives of Pennsylvanians since William Penn founded his commonwealth through PHMC's Historical Marker program.

PA SHPO works with a variety of people and communities to help identify eligible stories, prepare a nomination, manufacture and install the markers, and plan dedication ceremonies.

Nominations for historical markers may be submitted by any individual or organization and must be received by the PA SHPO on or before the annual deadline of December 1. The nominations are reviewed by a panel of independent historical experts in both academic and public history fields with geographic distribution across the state.

PHMC is working with partners across the commonwealth to encourage historical marker nominations for underrepresented subjects, specifically archaeology, women's, Hispanic, Latinx, and Asian American history, as well as Black and LGBTQ+ history in counties other than Philadelphia.

Most markers are dedicated in public events featuring public officials, local historians, community representatives, and others. Each dedication presents opportunities for Pennsylvanians to celebrate and understand their heritage. While the nominator or a local sponsor is responsible for the costs of marker production and installation, PHMC assumes ownership of the marker and oversees its long-term maintenance.

Learn more at www.phmc.pa.gov/Preservation/Historical-Markers.

HISTORICAL MARKERS

24

**Approved
Historical Markers
last year**

2500+

**Historical Markers
throughout
Pennsylvania**

**Historical marker
dedication in Philadelphia
for Bethel Burying Ground,
which was purchased in
1810 by Mother Bethel AME
Church as an independent
cemetery for the free Black
community.**



FEDERAL HISTORIC PRESERVATION TAX CREDIT

\$600+

Million dollars of
new rehabilitation
work for 70+
projects last year

\$7+

Billion dollars of
new rehabilitation
work for 2,500+
projects since 1976

Historic tax credits are the most widely used historic preservation incentive program in the country.

Since the inception of the federal Historic Tax Credit program in 1976, Pennsylvania has been a national leader in certified tax credit projects. The commonwealth consistently ranks in the top 10 states in the nation for qualified rehabilitations and total project investments in the hundreds of millions of dollars.

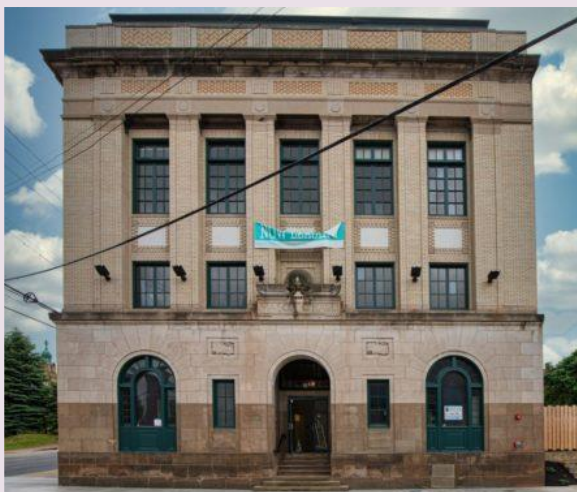
Designed to encourage private investment in the re-use of historic buildings, the historic tax credit program allows the owners of income-producing properties to take a dollar-for-dollar tax credit on federal income tax for eligible planning and construction costs related to the rehabilitation of a historic property for its new life.

A 20% tax credit is available for certified historic properties. To be eligible for the 20% tax credit, the building(s):

- Must be individually listed in the National Register, contribute to a National Register Historic District, or contribute to a Certified Local District;
- Must be used for income-producing purposes;
- Must be owned by the same owner and be an income producing property for 5 years;
- Rehabilitation work must follow the Secretary of the Interior's *Standards for Rehabilitation*; and
- Project must meet the "substantial rehabilitation test" and finished within 24 months.

The PA SHPO administers the historic tax credit program in partnership with the National Park Service and the Internal Revenue Service. Applicants submit the three components of the application to the PA SHPO for review, which is then forwarded to the National Park Service for final certification.

Learn more at www.phmc.pa.gov/Preservation/tax-credits/Pages/Federal-Tax-Credits.



Federal historic tax
credits were used to
rehabilitate the former
Homestead Masonic Hall
in Homestead, Allegheny
County, into unique
housing.

The Pennsylvania Historic Preservation Tax Credit is an important economic development tool for property owners and developers that benefit our communities.

Administered by Pennsylvania's Department of Community and Economic Development (DCED) with assistance from the PA SHPO, the Pennsylvania Historic Preservation Tax Credit (HPTC) program provides tax credits to qualified taxpayers who will be completing the rehabilitation of a qualified historic structure into an income-producing property.

To be eligible for the state historic preservation tax credit:

- Properties must be listed in the National Register of Historic Places or contribute to a listed historic district;
- Applicants must have a rehabilitation plan that is approved by the PA SHPO as being consistent with the Secretary of the Interior's *Standards for Rehabilitation*; and
- Applicants must be qualified taxpayers, which includes an individual, corporation, limited liability company, limited liability partnership or any other form of legal business entity.

In each application round, a maximum of \$3 million in tax credits is available for distribution to qualifying projects on a first come, first serve basis, with equitable regional distribution.

On July 2, 2012, Pennsylvania became the 30th state in the country to offer a state historic tax credit. In 2019, Pennsylvania's historic preservation tax credit was reauthorized and extended to 2031 with some significant improvements: the annual allocation was increased to \$5 million per project and program language was clarified for timing, recapture provides, and transferring the credits.

Learn more at www.phmc.pa.gov/Preservation/tax-credits/Pages/State-Tax-Credits.

PENNSYLVANIA HISTORIC PRESERVATION TAX CREDIT

\$5

Million dollars
awarded to 22
projects last year

\$23

Million dollars
invested by the
commonwealth for
70 projects since
2012

State historic tax credits
were a key part of
rehabilitating the 1847
Canal Houses in
Hollidaysburg into retail
and commercial space in
the downtown.



KEYSTONE HISTORIC PRESERVATION GRANTS

\$2.6 million
In grants awarded
to 52 projects in 24
counties last year

\$45+ million
In grants awarded
to help 900+ historic
places realize their
goals to date

The PA SHPO administers the Keystone Historic Preservation Grant program, which was established in 1994 under the Keystone Recreation, Park, and Conservation Fund to support projects that identify, preserve, promote, and protect historic properties of Pennsylvania for both the benefit of the public and the revitalization of communities.

The Keystone grants are one of the few dedicated funding sources available to support these types of historic preservation projects. Since its inception, this program has provided over \$45 million in funding to 900 projects preserving the commonwealth's diverse array of historic properties. From covered bridges to county courthouses, from roller coasters to museums, these grant funds have leveraged over \$156.3 million investment in local communities.

There are two type of grants under this program: Planning Project Grants and Construction Grants.

Planning Project Grants provide financial assistance of \$5,000 to \$25,000 as a matching grant to nonprofit organizations and local governments for the planning and development for publicly accessible historic properties.

Construction Grants provide financial assistance of \$5,000 to \$100,000 as a matching grant to nonprofit organizations and local governments for small construction projects for publicly accessible historic properties.

For both grants, applicants must be based in Pennsylvania, have tax exempt status or be an entity of local government, and must be incorporated and serving the public for at least five years prior to application. Historic properties are those listed in or eligible for listing in the National Register of Historic Places. Awardees are selected through a competitive application process once a year.

Learn more at www.phmc.pa.gov/Preservation/Grants-Funding.



**A Keystone grant to the
Society for the Preservation
of the Murals of Maxo
Vanka supported the study
of and long term planning
for the preservation of St.
Nicholas Church and Maxo
Vanka's murals.**

Throughout Pennsylvania's early development, our communities settled along the banks of the commonwealth's more than 86,000 miles of streams. During this time rivers and creeks functioned not only as a vital source of sustenance, but also as sources of industrial power and the backbone of the Keystone State's first transportation and commerce networks.

Because of the commonwealth's extensive network of waterways, the Pennsylvania Emergency Management Agency (PEMA) has identified flooding as the single greatest natural threat to life and property in each of the state's 67 counties, a threat which is only expected to become more severe in future years as heavy rainfall events become more frequent and intense.

PA SHPO began its Disaster Planning Initiative in 2014 in response to Hurricane Sandy. As part of the Disaster Relief Appropriations Act (P.L. 113-2), the National Park Service awarded the PA SHPO \$1.5 million to help stabilize or repair historic properties damaged by Hurricane Sandy and undertake disaster-related planning initiatives.

Using these funds, PA SHPO is working with PEMA and other partners through 2020 to:

- Integrate disaster planning into historic resource survey efforts;
- Incorporate and prioritize historic properties into hazard mitigation planning at the local, county, and state levels;
- Develop model guidance related to historic properties;
- Offer grants to property owners and nonprofit organizations for reimbursing the costs associated with repairing National Register eligible or listed historic properties damaged by Hurricane Sandy;
- Provide training and educational programs on disaster-related topics.

Learn more at www.phmc.pa.gov/Preservation/Disaster-Planning.

PA SHPO, the City of Philadelphia and US Army Corps of Engineers partnered on the Manayunk Main Street Historic District Flood Guide, which identifies potential hazard mitigation measures for historic buildings.



DISASTER PLANNING INITIATIVE

1,400+

Older and historic
places surveyed in
flood-prone
communities

550+

People engaged
through meetings,
conferences, and
workshops

CERTIFIED LOCAL GOVERNMENT PROGRAM

45
Municipalities in
Pennsylvania are
part of the CLG
program

\$130,000+
In grants awarded
for preservation
projects in CLGs
last year

Local governments can invigorate their historic preservation activities by participating in the Certified Local Government (CLG) program. Enabled by a 1980 amendment to the National Historic Preservation Act, this National Park Service program gives municipalities the opportunity to strengthen local historic preservation activities through exclusive funding incentives and enhanced technical assistance. In Pennsylvania, the CLG program is administered by the PA SHPO.

To be certified, local governments agree to enact historic preservation ordinances and/or zoning and to participate in the process of nominating and reviewing properties in their municipality for listing in the National Register of Historic Places. CLGs also agree to maintain and update information on historic resources in their communities and to provide training for local historic district review boards and/or historic preservation commissions.

One of the benefits to becoming a Certified Local Government is financial. Federal law requires that the PA SHPO set aside at least 10% of its Historic Preservation Fund (HPF) allocation for distribution to Certified Local Governments. In Pennsylvania, designated CLG municipalities can apply for this federal funding through a competitive, annual matching grant program.

The PA SHPO employs three Community Preservation Coordinators—one each in the eastern, central, and western sections of the state—to assist our CLGs. These Coordinators are also available to assist any Pennsylvania community with historic preservation planning, technical assistance, support, and education upon request.

Learn more at www.phmc.pa.gov/Preservation/CLG-Program.



**In July 2020,
Chadds Ford Township
became the 45th Certified
Local Government in
Pennsylvania and the 3rd
in Delaware County.**

Municipalities have many options available to them for identifying, preserving, and enhancing historic places in their communities. To help local governments and organizations foster and manage historic preservation programs at the local level, the PA SHPO's Eastern, Central, and Western Pennsylvania Community Preservation Coordinators offer technical assistance, advice, and educational programs, such as:

- *Historic Preservation Planning*: The Municipalities Planning Code calls on counties and municipalities to include provisions for preserving historic places and archaeological sites in their comprehensive plans and zoning. The PA SHPO has developed guidance to assist with developing an effective comprehensive historic preservation plan.
- *Ordinances and Overlays*: For municipalities considering a preservation ordinance or zoning code amendment to protect historic properties, the PA SHPO can help find the right solution based on the community's goals, its historic character, and the administrative capacity of the municipal staff and volunteers.
- *Resources for Historic Architectural Review Boards and Historical Commissions*: The PA SHPO offers technical assistance, support, and education for Review Board members and municipal staff.
- *Preservation Strategies*: The PA SHPO can help municipalities and organizations navigate state and federal historic preservation programs, promote community revitalization and economic development, and investigate options for preserving key properties.
- *Historic District Act certification*: The PA SHPO can assist municipalities interested in designating a local historic district under the Historic District Act (Act 167 of 1961). Assistance can include identifying boundaries, preparing certification requests, and reviewing ordinance language and procedures.

Learn more at www.phmc.pa.gov/Preservation/Community-Preservation.

COMMUNITY PRESERVATION PROGRAM

200+
Engagements
with local
communities

5,150+
People engaged
through Community
Preservation
outreach

PA SHPO Community
Preservation Coordinators
provide technical
assistance and training for
communities like Wilkes-
Barre, Luzerne County,
which established its local
historic district in 2000.



SURVEY PROGRAMS

PA SHPO manages two survey programs for identifying and recording older and historic places in Pennsylvania. The inventory of buildings, sites, structures, objects and landscapes is maintained and made available online for the benefit of all Pennsylvanians.

The Pennsylvania Above Ground Survey (PAGS) collects information about the commonwealth's historic and cultural places, such as buildings, farms, bridges, parks, neighborhoods, and landscapes. Throughout the commonwealth, Pennsylvanians are dedicating their time to photograph and document the historic and cultural places that they care about, and they are sharing their work with the PA SHPO.

Places identified through PAGS are mapped in the PA SHPO's online GIS database and property-level data, when available, can be accessed by individuals, property owners, municipalities, planners, and state and federal agencies to help them in their planning efforts.

The Pennsylvania Archaeological Site Survey (PASS) is PA SHPO's statewide inventory of over 25,000 recorded archaeological sites, representing 16,000 years of Pennsylvania's history. Archaeological site information has been collected across Pennsylvania since the 1940s.

We welcome site information from everyone, including museums, historical societies, students, and collectors. Recording finds and their location is an important step in learning about the past and protecting these important places.

Learn more at www.phmc.pa.gov/Preservation/survey.

1,400+

Above-ground
resources added to
online GIS last
year

485+

Archaeological
resources added
to online GIS last
year



The Pine Run Rock
Shelters #2 Complex in
northwestern
Pennsylvania, is one of
the hundreds of resources
entered into
Pennsylvania's
archaeological record in
2020.

In Pennsylvania, the National Historic Preservation Act of 1966, as amended, and the Pennsylvania History Code require federal and state agencies to take preservation values into consideration when they propose a project that may affect historic properties or archaeological sites.

Every day, PA SHPO Environmental Review staff work closely with government agencies, local governments, and historic preservation professionals to advise and assist them with the Environmental Review process, such as:

- the identification of historic properties and archaeological sites in their project area; and
- determining if the proposed project will affect these places.

If historic properties and/or archaeological sites will be affected, PA SHPO staff often assist agencies with:

- suggesting revisions to a project to avoid historic properties or archaeological sites or minimize the impact of the project or
- identifying mitigation to compensate for the loss of a historic property or archaeological site.

The PA SHPO has been working successfully with state and federal agencies and consulting parties to develop creative, innovative, and meaningful mitigation outcomes in the public interest.

Examples of meaningful mitigation developed by SHPO staff in consultation with agencies this year include funding for historic barns and bridges, National Register nominations, public education, including websites and exhibits, and design guidelines for historic districts.

Learn more at www.phmc.pa.gov/Preservation/Environmental-Review.

ENVIRONMENTAL REVIEW

5,350+

Section 106 and
State History
Code reviews last
year

30+

Agreements signed
with federal
agencies

PA SHPO recently
completed survey work in
several western PA
communities like
Monongahela, Washington
County as part of a larger
market analysis study to
help places struggling with
deindustrialization.



EDUCATION & OUTREACH

134,400+

Views of
PA SHPO's
blog posts
last year

5,400+

people received
PA SHPO's
newsletters
last year

Education and outreach are core components of the PA SHPO's mission and programs & empower Pennsylvanians to engage and promote preservation in their own communities. The PA SHPO works with a wide variety of audiences, ranging from the general public to municipal governments, from state and federal agencies to legislators.

The PA SHPO's role is to provide information about and assistance with historic preservation activities and the federal and state historic preservation programs in Pennsylvania. Guided by our Education & Training Program Strategic Plan, PA SHPO works to:

- meet our audiences needs for education and training;
- increase access to accurate and timely information;
- improve the use of federal and state programs;
- advance knowledge of and activities regarding historic preservation in Pennsylvania; and
- foster stronger relationships with partner agencies and organizations.

In addition to the education and outreach that happens daily, there are other specific tools and activities we use to reach Pennsylvanians, including:

- a weekly blog, pahistoricpreservation.com, which covers a variety of topics relating to historic preservation, archaeology, and Pennsylvania history;
- three monthly and two bi-annual e-newsletters
- live and recorded webinars, workshops, and presentations; and
- exhibit booths at partner conferences and events.

Learn more at www.phmc.pa.gov/Preservation/education-outreach.



PA SHPO's Historic Metal Truss Bridge (HMTB) e-newsletter promotes PennDOT's HMTB marketing program with highlights about available bridges, adaptive reuse success stories, and resources.

PA-SHARE, or Pennsylvania's State Historic and Archaeological Resource Exchange, is the PA SHPO's brand new enterprise-wide, integrated online database management and spatially enabled cultural resource GIS system.

PA-SHARE is much more than just a map-based inventory of historic and archaeological sites and surveys. PA-SHARE is a sophisticated system hosting all PA SHPO program areas and is a primary tool for the public, agencies, and our partners to make informed decisions, efficiently move through processes, and more easily collect historic and archaeological resource information.

PA-SHARE is an important planning tool, no matter what type of work Pennsylvanians do with cultural resources:

- Data for project planning: Access to digitized legacy data, integrated criteria and spatial search, and customizable maps
- Submit and track projects online: Convenient submission wizards and electronic responses for most PA SHPO programs
- Field survey and reporting: Mapping historic and archaeological resources in the field with the Surveyor mobile data collection tool.

PA-SHARE has built in functionality that can help streamline, manage, and improve project planning and delivery. There are four levels of access to accommodate user needs for interacting with PA SHPO, each with additional functionality and benefits. Guest and Basic users can access PA-SHARE for free. Pro and Business subscription users enjoy access to all of PA SHPO's digitized files, project tracking and user dashboards, additional map functionality, and Surveyor for mobile field work.

Learn more at www.phmc.pa.gov/PA-SHARE.





Pennsylvania State Historic Preservation Office

PENNSYLVANIA HISTORICAL AND MUSEUM COMMISSION

Tom Wolf

Governor

Nancy Moses

Chair, Pennsylvania Historical & Museum Commission

Andrea Lowery

Executive Director, Pennsylvania Historical & Museum Commission
& State Historic Preservation Officer

Andrea MacDonald

PA SHPO Director & Deputy State Historic Preservation Officer

Contact the PA SHPO Office

(717) 783-8947 or

mail@pahistoricpreservation.com

March 2021

This publication has been financed in part with federal funds from the National Park Service, U.S. Department of the Interior, made available through the Pennsylvania Historical & Museum Commission, State Historic Preservation Office. The contents and opinions, however, do not necessarily reflect the views or policies of these agencies. This program receives federal financial assistance for identification and protection of historic properties. Under Title VI of the Civil Rights Act of 1964, Section 504 of the Rehabilitation Act of 1973, and the Age Discrimination Act of 1975, as amended, the U.S. Department of the Interior prohibits discrimination on the basis of race, color, national origin, disability or age in its federally assisted programs. If you believe you have been discriminated against in any program, activity, or facility as described above, or if you desire further information, please write to: Office of Equal Opportunity National Park Service; 1849 C Street, N.W.; Washington, D.C. 20240.